

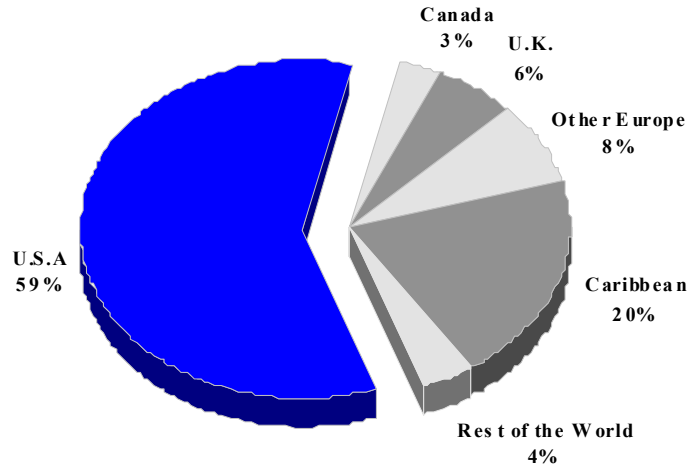
ANGUILLA

TOURISM HIGHLIGHTS FOR 2007

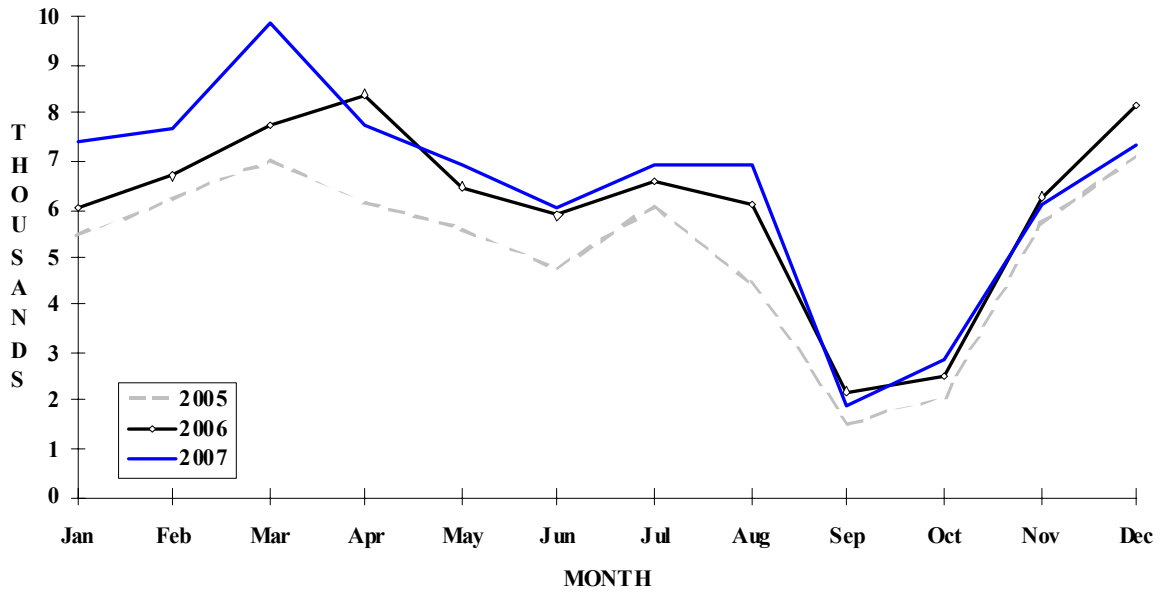
VISITOR ARRIVALS			
Tourist Arrivals ✈	77,652	Same Day Visitors	86,415
➔ <i>Winter</i>	42.1%		
➔ <i>Summer</i>	57.9%		
VISITOR PROFILE			
Average Length of Stay (<i>nights</i>)	7.7	Tourist Arrivals by Purpose of Visit	
		➔ <i>Holiday</i>	89.1%
		➔ <i>Business</i>	10.9%
TOURISM AND OTHER RELATED ECONOMIC STATISTICS			
Average Daily Expenditure (<i>US\$</i>) ^{VI}		Visitor Expenditure (<i>US\$ millions</i>) ^I	\$107.4
➔ <i>Winter</i>	\$213.81	GDP at Factor Cost (<i>US\$ millions</i>) ^I	\$157.5
➔ <i>Summer</i>	\$154.49	Consumer Price Index (<i>% ch. 2005/'04</i>)	4.6%
Tourism Budgets (<i>US\$ thousands</i>) ^{VII}	\$819	Hotel and Restaurant contribution to GDP ^I	28.1%
ACCOMMODATION STATISTICS		SOCIO-ECONOMIC STATISTICS	
Rooms	720	Land Area (<i>square Kilometres</i>)	91
Occupancy rate ^{IV}	41.9%	Population (<i>thousand, mid year 2006</i>)	13.9

ANGUILLA

**TOURIST ARRIVALS BY MAIN MARKETS
2007**



MONTHLY TOURIST ARRIVALS



ANGUILLA

VISITOR ARRIVALS BY CATEGORY

Category	2003	2004	2005	2006	%Share	
					2007	2007
Tourists	46915	53987	62084	72962	77652	47.3
Same-day visitors	62367	66801	81102	94283	86415	52.7
TOTAL	109282	120788	143186	167245	164067	100.0
By Sea	80951	96835	111169	133794	128905	78.6
By Air	28331	23953	32017	33451	35162	21.4

TOURIST ARRIVALS BY COUNTRY OF RESIDENCE

Country of Residence	2003	2004	2005	2006	%Share	
					2007	2007
U.S.A.	30644	35751	41733	44489	45974	59.2
Canada	1289	1549	1792	1977	2393	3.1
United Kingdom	2962	3198	3834	4344	4568	5.9
Other Europe	3346	4469	4279	4874	6227	8.0
Caribbean	7362	7499	8529	15280	15425	19.9
Other	1312	1521	1917	1998	3065	3.9
TOTAL	46915	53987	62084	72962	77652	100.0

ANGUILLA

MONTHLY TOURIST ARRIVALS*

Months	2003	2004	2005	2006	% Change	
					2007	2007\06
January	4018	4580	5430	6042	7411	22.7
February	4501	5563	6208	6681	7668	14.8
March	4930	5846	6997	7718	9895	28.2
April	4787	6005	6117	8392	7736	-7.8
May	3915	5130	5588	6466	6907	6.8
June	3373	4001	4766	5845	6017	2.9
July	4542	5485	6093	6588	6936	5.3
August	3856	4246	4460	6086	6929	13.9
September	967	1178	1525	2196	1889	-14.0
October	1712	1494	2093	2513	2847	13.3
November	4541	4410	5708	6268	6063	-3.3
December	5773	6049	7099	8167	7354	-10.0
TOTAL	46915	53987	62084	72962	77652	6.4

**Excluding visiting Anguillan nationals who reside abroad*

TOURIST ACCOMMODATION (Rooms)

Type of Accommodation	2004	2005	2006	2007	% Share
					2007
Hotels ¹	346	337	400	403	56.0
Guest Houses	88	96	135	135	18.8
Apartments/Villas	322	313	204	182	25.2
TOTAL	756	746	739	720	100.0

¹ *Sonesta Hotel closed in September 2002*

Source: Department of Tourism, Anguilla

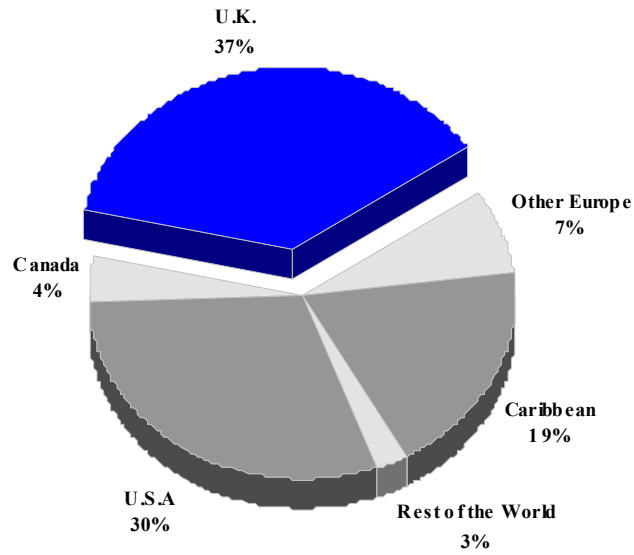
ANTIGUA AND BARBUDA

TOURISM HIGHLIGHTS FOR 2007

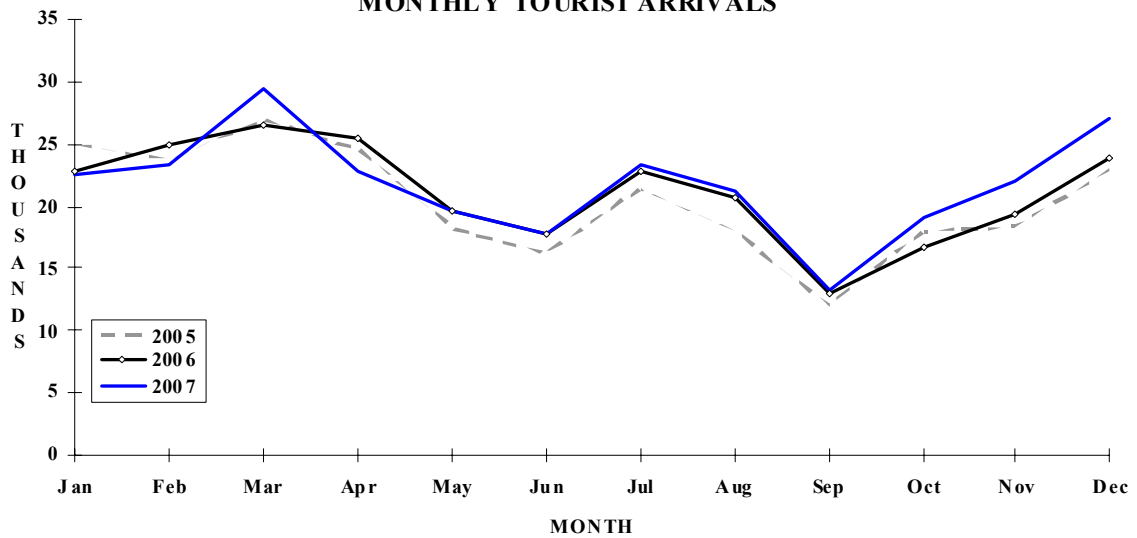
VISITOR ARRIVALS			
Tourist Air Arrivals (Non-nationals) ➔	261,786	Cruise Passenger Arrivals	672,788
➔ <i>Winter</i>	37.5%	➔ <i>Winter</i>	51.3%
➔ <i>Summer</i>	62.5%	➔ <i>Summer</i>	48.7%
Tourist Air Arrivals (Nationals)	n.a	Cruise Ship Calls	384
VISITOR PROFILE			
Tourist Arrivals by Purpose of Visit		Age Distribution of Visitors	
➔ <i>Holiday</i>	91.0%	➔ 15 and Under	8.6%
➔ <i>Business</i>	5.2%	➔ 15-44	49.6%
➔ <i>Other</i>	3.8%	➔ 45-64	34.6%
		➔ 65+	7.2%
TOURISM AND OTHER RELATED ECONOMIC STATISTICS			
Total Expenditure (<i>US\$ million</i>) ¹	\$326.8	Hotel and Restaurant contribution to GDP ¹	9.0%
GDP at Factor Cost (<i>US \$million</i>)	\$842.3	Consumer Price Index (% <i>ch. 2005/'04</i>)	2.1%
ACCOMMODATION STATISTICS		SOCIO-ECONOMIC STATISTICS	
Rooms ¹	3,393	Land Area (<i>square Kilometres</i>)	440
		Population (<i>thousand mid year 2006</i>)	84.3

ANTIGUA & BARBUDA

**TOURIST ARRIVALS BY MAIN MARKETS
2007**



MONTHLY TOURIST ARRIVALS



ANTIGUA AND BARBUDA

TOURIST ARRIVALS BY COUNTRY OF RESIDENCE*

Country of Residence	2003	2004	2005	2006	2007	% Share 2007
U.S.A.	64363	70534	68527	73497	78697	30.1
Canada	8603	9452	9855	10053	10489	4.0
United Kingdom	83447	98101	92518	89564	96797	37.0
Other Europe	15218	15416	15750	17123	18651	7.1
Caribbean	47588	48933	49011	58994	50316	19.2
Rest of World	4813	3361	9723	4439	6836	2.6
TOTAL	224032	245797	245384	253670	261786	100.0

* Non-national Air Arrivals only

The statistics above exclude yacht and other tourist arrivals by sea, as well as visits by nationals of Antigua and Barbuda who permanently reside abroad. Further details are provided below

OTHER VISITORS	2003	2004	2005	2006	2007
Yacht	n.a	n.a	n.a	21531	24686
Other Sea Arrivals	n.a	n.a	n.a	n.a	n.a
Nationals Resident Abroad	n.a	n.a	n.a	n.a	n.a

MONTHLY TOURIST ARRIVALS*

Months	2003	2004	2005	2006	2007	%Change 2007/06
January	19609	22222	24918	22932	22601	-1.4
February	18988	23322	23738	24815	23325	-6.0
March	19516	23596	26979	26410	29441	11.5
April	20485	27970	24562	25523	22806	-10.6
May	19378	18557	18218	19698	19572	-0.6
June	16711	16970	16276	17779	17819	0.2
July	20106	22971	21421	22764	23450	3.0
August	19932	18124	18049	20757	21252	2.4
September	11746	13023	12014	12893	13384	3.8
October	15954	16568	17936	16744	19142	14.3
November	18357	18551	18389	19368	21967	13.4
December	23250	23923	22884	23987	27027	12.7
TOTAL	224032	245797	245384	253670	261786	3.2

* Non-national Air Arrivals only

ANTIGUA AND BARBUDA

CRUISE PASSENGER ARRIVALS*

Months	2003	2004	2005	2006	2007	% Change 2007/06
January	56195	71669	74925	69956	99256	41.9
February	42841	62424	64365	64636	85497	32.3
March	44298	68789	67078	64783	90545	39.8
April	45217	68776	61266	61851	69544	12.4
May	8259	13787	9353	10092	29762	194.9
June	9175	14542	7219	7373	23074	213.0
July	9802	16648	10244	7456	23058	209.3
August	9533	18680	10542	7454	24275	225.7
September	10210	22872	6807	10968	21995	100.5
October	25515	21855	13550	18365	34434	87.5
November	55116	63078	52934	66906	73680	10.1
December	69525	79633	88568	81783	97668	19.4
TOTAL	385686	522753	466851	471623	672788	42.7

Cruise Ship Calls** 297 375 321 352 384

*Excludes Windjammer Cruises which brought 11,756 passengers in 1999, 7,891 in 2000.

** At the Deep Water Harbour , Nelson Dockyard and Heritage Quay.

TOURIST ACCOMMODATION (Rooms)

Type of Accommodation	2003	2004	2005	2006	2007
Hotels	n.a	2855	n.a	n.a	n.a
Apartments/Villa	n.a	388	n.a	n.a	n.a
Guest Houses	n.a	33	n.a	n.a	n.a
TOTAL	n.a	3276	n.a	3393	n.a

Source: Antigua Department of Tourism

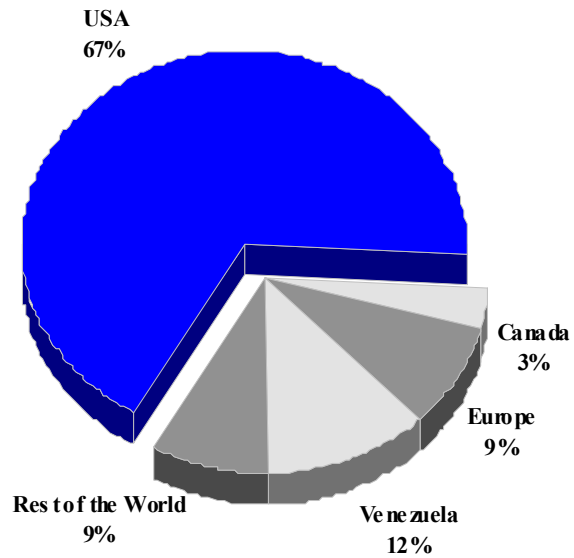
ARUBA

TOURISM HIGHLIGHTS FOR 2007

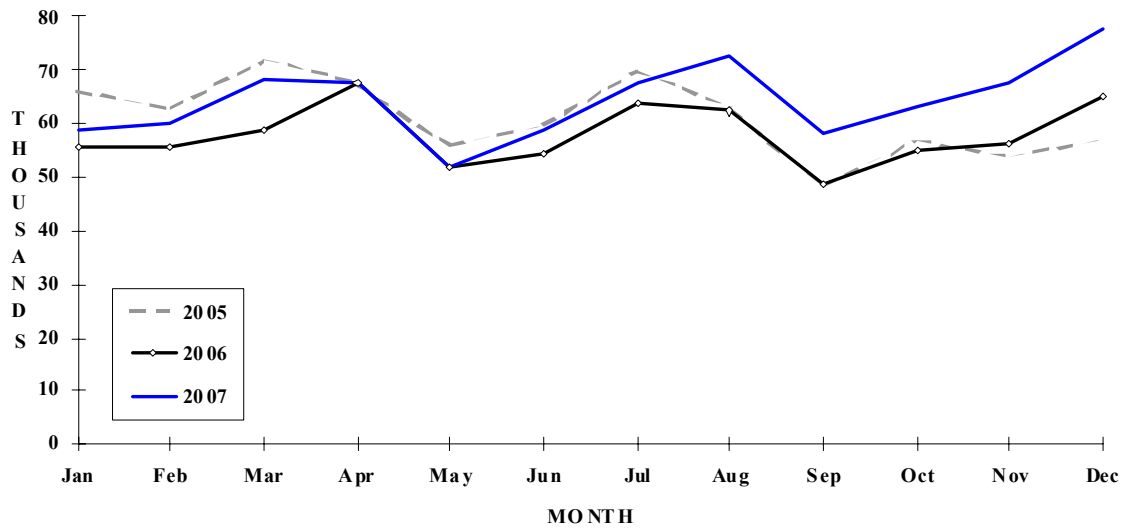
VISITOR ARRIVALS			
Tourist Arrivals ➔ ➔ <i>Winter</i> ➔ <i>Summer</i>	772,073 33.0% 67.0%	Cruise Passenger Arrivals ➔ <i>Winter</i> ➔ <i>Summer</i> Cruise Ship Calls	481,775 50.5% 49.5% 315
VISITOR PROFILE			
Average Length of Stay (nights) Tourist Arrivals by Purpose of Visit ➔ <i>Holiday</i> ➔ <i>Business</i> ➔ <i>Other</i>	7.6 87.7% 3.3% 9.0%	Tourist Arrivals by Place of Stay ➔ Hotels ➔ Guest Houses/Apartments ➔ Private	87.7% 1.2% 11.1%
TOURISM AND OTHER RELATED ECONOMIC STATISTICS			
Total Expenditure (<i>US\$ millions</i>) ^I Receipts per visitor night (<i>US\$</i>) ^{III}	\$808.4 \$186.59	Tourism Budget (<i>US\$ thousands</i>) ^{II} Consumer Price Index (% <i>ch. 2007/'06</i>)	\$23,595 6.0%
ACCOMMODATION STATISTICS		SOCIO-ECONOMIC STATISTICS	
Rooms ^{II} Room Occupancy Rate	7,966 77.8%	Land Area (<i>square Kilometres</i>) Population (<i>thousand mid year 2006</i>)	180 102.8

ARUBA

**TOURIST ARRIVALS BY MAIN MARKETS
2007**



MONTHLY TOURIST ARRIVALS



TOURIST ARRIVALS BY COUNTRY OF RESIDENCE

Country of Residence	2003	2004	2005	2006	2007	% Share 2007
U.S.A.	460241	531287	532352	493285	520385	67.4
Canada	17218	20560	21350	22590	25673	3.3
Holland	36415	38122	38667	37130	37844	4.9
Other Europe	18296	22306	24514	24863	29509	3.8
Venezuela	54554	59218	59928	57105	92157	11.9
Brazil	2785	4762	6067	6667	7480	1.0
Other South America	17456	18391	17808	20855	24177	3.1
Neth. Antilles	20962	21472	19071	19924	22456	2.9
Other Caribbean	10526	9799	8848	8461	9598	1.2
Rest of World	3453	2240	3909	3492	2794	0.4
TOTAL	641906	728157	732514	694372	772073	100.0

MONTHLY TOURIST ARRIVALS

Months	2003	2004	2005	2006	2007	% Change 2007/06
January	50017	57266	66040	55590	58997	6.1
February	51940	61560	62640	55716	59837	7.4
March	53389	58272	72188	59032	68193	15.5
April	55609	67035	67611	67406	67825	0.6
May	45199	57201	55805	52050	51817	-0.4
June	49479	53908	59632	54390	58811	8.1
July	60208	69930	69959	63602	67659	6.4
August	65270	68262	62914	62324	72537	16.4
September	45480	52611	48047	48470	57955	19.6
October	54826	62487	56805	55048	62868	14.2
November	56089	58570	53663	56011	67851	21.1
December	54400	61055	57210	64733	77723	20.1
TOTAL	641906	728157	732514	694372	772073	11.2

CRUISE PASSENGER ARRIVALS

Months	2003	2004	2005	2006	2007	% Change 2007/06
January	69298	66504	65707	69393	75219	8.4
February	61276	54086	59593	64878	54706	-15.7
March	70826	64571	65359	75179	65711	-12.6
April	56758	56940	65930	57402	47483	-17.3
May	25615	28250	25642	31445	23345	-25.8
June	19815	28046	20662	22817	10791	-52.7
July	23379	28809	20778	17304	10879	-37.1
August	23259	28220	19857	24136	11650	-51.7
September	23240	24181	15610	22741	11272	-50.4
October	46172	56482	34533	46486	25858	-44.4
November	50411	62634	77094	75677	67807	-10.4
December	72278	77597	82054	84016	77054	-8.3
TOTAL	542327	576320	552819	591474	481775	-18.5
Cruise Ship Calls	315	318	311	314	315	

TOURIST ACCOMMODATION (Rooms)

Type of Accommodation	2002	2003	2004	2005
Hotels, Apartments	n.a	n.a	n.a	n.a
Condo	n.a	n.a	n.a	n.a
Other	n.a	n.a	n.a	n.a
TOTAL	7500	7500	6886	7966

* Based on data from the Aruba Hotel and Tourism Association (AHATA)

Source: Aruba Tourism Authority

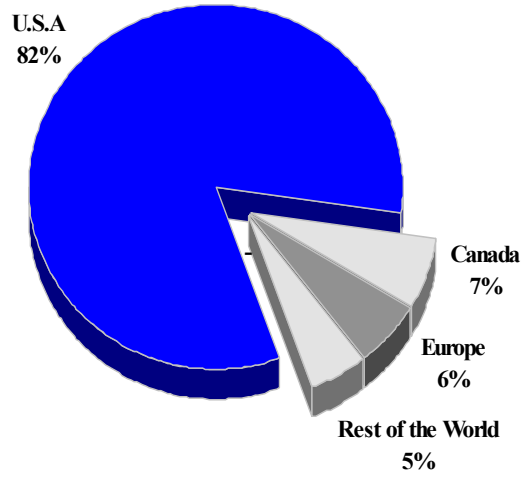
THE BAHAMAS

TOURISM HIGHLIGHTS FOR 2007

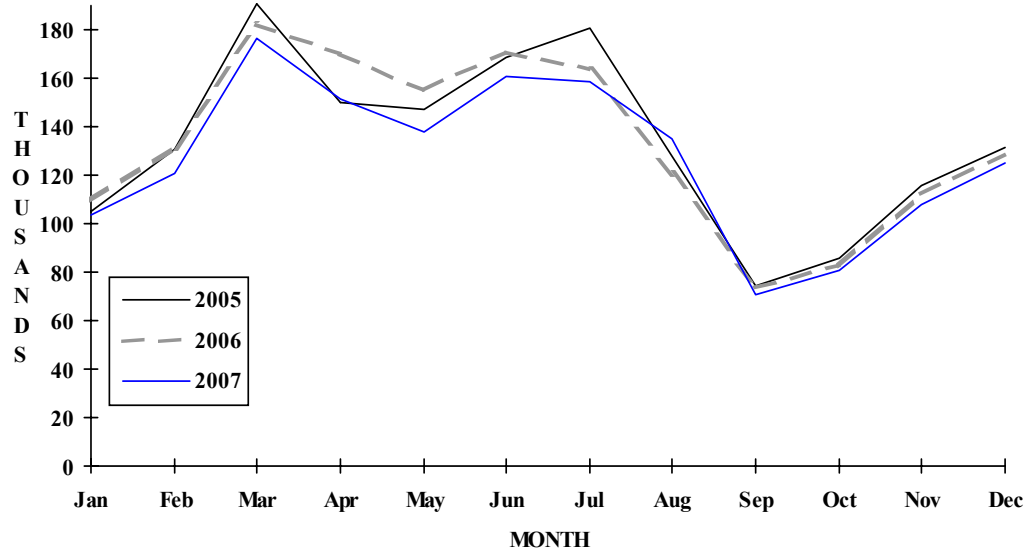
VISITOR ARRIVALS			
Tourist Arrivals ➔	1,527,726	Cruise Passenger Arrivals	2,970,659
➔ <i>Winter</i>	36.1%	➔ <i>Winter</i>	37.7%
➔ <i>Summer</i>	63.9%	➔ <i>Summer</i>	62.3%
Same Day Visitors	n.a	Cruise Ship Calls	
VISITOR PROFILE			
Average Length of Stay (<i>nights</i>)	6.6	Tourist Arrivals by Place of Stay ^{II}	
Tourist Arrivals by Purpose of Visit ^{III}		➔ <i>Hotels</i>	73.8%
➔ <i>Holiday</i>	89.1%	➔ <i>Guest Houses/Apartments</i>	11.3%
➔ <i>Business</i>	9.5%	➔ <i>Private</i>	4.6%
➔ <i>Other</i>	1.4%	➔ <i>Other</i>	10.3%
TOURISM AND OTHER RELATED ECONOMIC STATISTICS			
Total Expenditure (<i>US\$ millions</i>) ^I	\$2,056.4	GDP at Market Prices (<i>US\$ million</i>) ^I	\$5,260.0
Cruise Expenditure (<i>US\$ millions</i>) ^I	\$172.0	Consumer Price Index (% <i>ch.</i> 2005/'04)	2.2%
Tourism Budget (<i>US\$ thousands</i>)	\$67,150		
ACCOMMODATION STATISTICS		SOCIO-ECONOMIC STATISTICS	
Rooms	16,340	Land Area (<i>square Kilometres</i>)	13,864
Room Occupancy Rates	60.9%	Population (<i>thousand mid year 2006</i>)	329.0

THE BAHAMAS

TOURIST ARRIVALS BY MAIN MARKETS 2007



MONTHLY TOURIST ARRIVALS



VISITOR ARRIVALS BY CATEGORY

Category	2003	2004	2005	2006	2007
Tourists	1510169	1561312	1608153	1600862	1527726
Cruise Passenger	2970174	3360012	3078709	3078534	2970659
Day Visitors	83921	86291	n.a	n.a	n.a
TOTAL	4564264	5007615	4686862	4679396	4498385

TOURIST ARRIVALS BY COUNTRY OF RESIDENCE

Country of Residence	2003	2004	2005	2006	2007	% Share 2007
United States	1305335	1360912	1380083	1365104	1263678	82.7
Canada	63148	68462	75643	84639	100340	6.6
Europe	93170	83590	85277	82209	87170	5.7
Rest of the World	48516	48348	67150	68910	76538	5.0
TOTAL	1510169	1561312	1608153	1600862	1527726	100.0

MONTHLY TOURIST ARRIVALS

Months	2003	2004	2005	2006	2007	% Change 2007/06
January	102975	112604	105119	109739	103672	-5.5
February	125034	144852	130608	131770	120831	-8.3
March	165072	192455	190708	182244	176111	-3.4
April	147212	174192	149710	169800	151203	-11.0
May	135289	147997	147237	155035	138129	-10.9
June	152797	170018	168408	170873	160641	-6.0
July	160088	177872	180397	163518	158671	-3.0
August	137445	129714	128197	120715	134695	11.6
September	64981	28933	74555	73942	70425	-4.8
October	89782	71710	86025	82745	80637	-2.5
November	104574	95060	115842	111981	107961	-3.6
December	124920	115905	131347	128500	124750	-2.9
TOTAL	1510169	1561312	1608153	1600862	1527726	-4.6

BAHAMAS

TOURIST ARRIVALS BY AREA*

Area	2003	2004	2005	2006	2007
Grand Bahama	376425	374433	316265	298937	279193
Nassau\New Providence	895612	921932	1019017	1019198	960767
Family Islands	238132	264947	272871	282727	287766
TOTAL	1510169	1561312	1608153	1600862	1527726

* Intended address in The Bahamas

CRUISE PASSENGER ARRIVALS

Months	2003	2004	2005	2006	% Change	
					2007	2007/06
January	268920	281142	283378	272325	287372	5.5
February	253670	280530	262342	256617	251315	-2.1
March	282087	369690	302994	310835	315770	1.6
April	255661	363928	309188	321492	266626	-17.1
May	234543	274785	217304	244376	220646	-9.7
June	230630	262860	202802	231816	209443	-9.7
July	228600	309423	249978	246289	226927	-7.9
August	250431	296654	212752	225041	233201	3.6
September	183581	116977	190995	190834	200659	5.1
October	216568	246867	237414	209638	188156	-10.2
November	278966	276422	276793	254122	245365	-3.4
December	286517	280734	332769	315149	325179	3.2
TOTAL	2970174	3360012	3078709	3078534	2970659	-3.5
Grand Bahama	203312	327933	321582	339913	311762	-8.3
New Providence	1687851	1981883	1880696	1660094	1638174	-1.3
Family Islands	1079011	1050196	876431	1076390	1020723	-5.2

TOURIST ACCOMMODATION (Rooms)*

Type of Accommodation	2003	2004	2005	2006	2007
Total Rooms	15393	15508	14800	14929	16340

*Licensed Properties

Source: Bahamas Ministry of Tourism

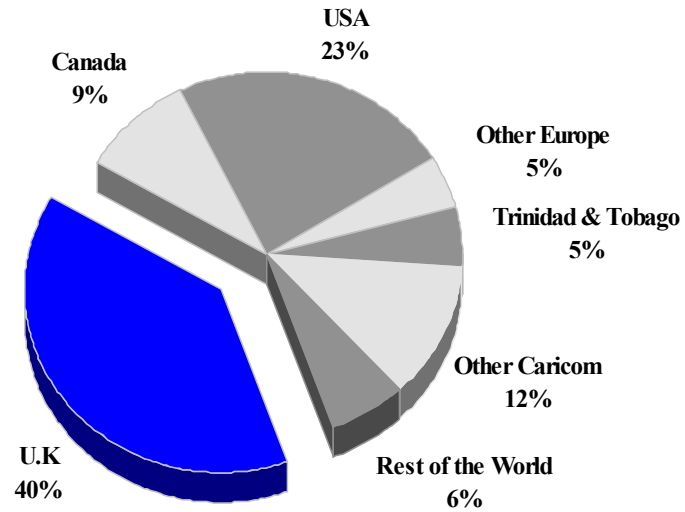
BARBADOS

TOURISM HIGHLIGHTS FOR 2007

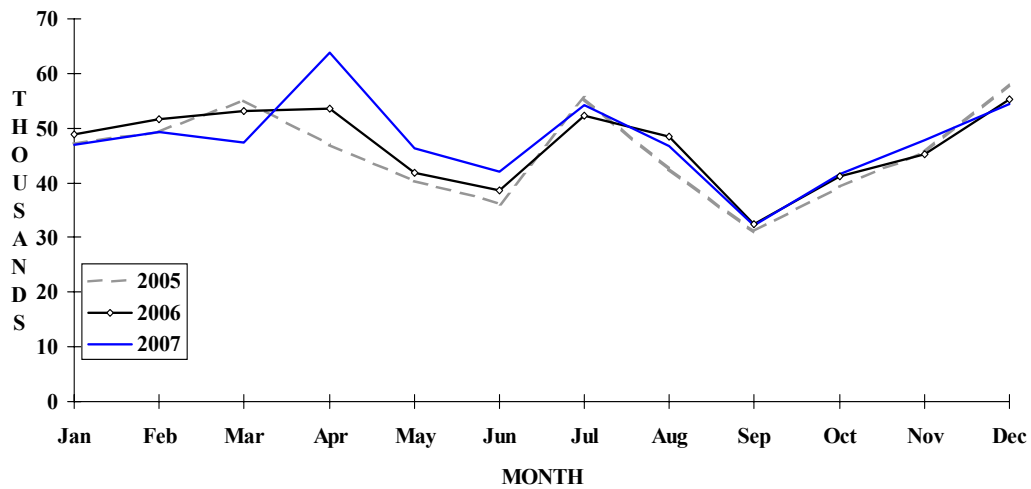
VISITOR ARRIVALS			
Tourist Arrivals →	572,937	Cruise Passenger Arrivals	647,636
→ <i>Winter</i>	36.2%	→ <i>Winter</i>	43.1%
→ <i>Summer</i>	63.8%	→ <i>Summer</i>	56.9%
		Cruise Ship Calls	486
VISITOR PROFILE			
Average Intended Length of Stay (<i>nights</i>) ¹¹	9.8	Tourist Arrivals by Place of Stay¹²	
Tourist Arrivals by Purpose of Visit¹		→ <i>Hotels</i>	49.5%
→ <i>Holiday</i>	78.5%	→ <i>Guest House/Apartment</i>	10.7%
→ <i>Business</i>	12.4%	→ <i>Private</i>	23.9%
→ <i>Other</i>	9.1%	→ <i>Other</i>	0.2%
TOURISM AND OTHER RELATED ECONOMIC STATISTICS			
Total Expenditure (<i>US\$ millions</i>) ¹	\$953.4	Hotel and Restaurant contribution to GDP ¹³	12.4%
Average Daily Expenditure (<i>US\$</i>) ¹²	\$127.48	GDP at Factor Cost (<i>US\$ million</i>)	\$2,691.9
Tourism Budget (<i>US\$ thousands</i>) ¹⁴	\$22,137	Consumer Price Index (% <i>ch. 2006/'05</i>)	7.3%
ACCOMMODATION STATISTICS		SOCIO-ECONOMIC STATISTICS	
Rooms ¹⁵	6,353	Land Area (<i>square Kilometres</i>)	432.0
Room Occupancy Rates ¹⁶	53.8%	Population (thousand mid year 2006)	274.0

BARBADOS

**TOURIST ARRIVALS BY MAIN MARKETS
2007**



MONTHLY TOURIST ARRIVALS



BARBADOS

TOURIST ARRIVALS BY COUNTRY OF RESIDENCE

Country of Residence	2003	2004	2005	2006	% Share	
					2007	2007
United States	129326	129675	131005	130767	133519	23.3
Canada	49641	50025	47690	49198	52981	9.2
United Kingdom	202564	213945	202765	211523	223575	39.0
Other Europe	29526	30030	26852	29400	27198	4.7
Trinidad & Tobago	27530	26492	30889	34480	30404	5.3
Other Caricom	69278	78262	97134	82989	68979	12.0
Rest of World	23346	23073	11199	24201	36281	6.3
TOTAL	531211	551502	547534	562558	572937	100.0

MONTHLY TOURIST ARRIVALS

Months	2003	2004	2005	2006	% Change	
					2007	2007/06
January	40743	44719	47242	48888	47006	-3.9
February	43643	49870	49338	51580	49316	-4.4
March	49016	54190	54963	53169	47375	-10.9
April	47504	47255	46979	53484	63841	19.4
May	40750	44865	40368	41849	46267	10.6
June	39994	38536	36289	38708	41980	8.5
July	52982	57285	55385	52315	54278	3.8
August	46745	45625	42741	48366	46685	-3.5
September	28737	31837	31099	32333	32331	0.0
October	38210	39717	39292	41153	41568	1.0
November	45924	43870	45773	45260	47806	5.6
December	56963	53733	58065	55183	54484	-1.3
TOTAL	531211	551502	547534	562288	572937	1.9

CRUISE PASSENGER ARRIVALS

Months	2003	2004	2005	2006	% Change	
					2007	2007/06
January	83577	101119	82204	64981	87192	34.2
February	66304	83975	64880	57894	64267	11.0
March	63071	94446	79841	62211	62034	-0.3
April	59365	71119	71676	56553	65722	16.2
May	20791	26826	21669	22488	24978	11.1
June	19360	32201	25596	22905	22154	-3.3
July	22863	27871	19494	19705	26566	34.8
August	19344	27165	19127	22266	26855	20.6
September	17716	28525	12975	22571	21328	-5.5
October	37657	40889	28471	32381	31852	-1.6
November	57797	82353	50777	69715	93544	34.2
December	91274	104781	86878	85422	121144	41.8
TOTAL	559119	721270	563588	539092	647636	20.1

Cruise Ship Calls	442	539	395	440	486
-------------------	-----	-----	-----	-----	-----

TOURIST ACCOMMODATION (Rooms)

Type of Accommodation	2002	2003	2004	2005
Hotels	} 4984	2663	n.a	4937
Apartment Hotels		2326	n.a	1245
Apartments & Cottages	1589	1071	n.a	-
Guest Houses	169	150	n.a	171
TOTAL	6742	6210	5945	6353

Source: Barbados Statistical Service

BELIZE

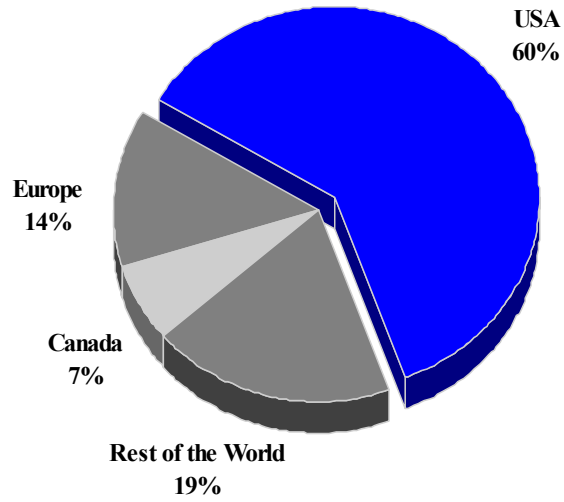
TOURISM HIGHLIGHTS FOR 2007

VISITOR ARRIVALS			
Tourist Arrivals →	251,423	Cruise Passenger Arrivals	624,128
→ <i>Winter</i>	40.6%	→ <i>Winter</i>	54.6%
→ <i>Summer</i>	59.4%	→ <i>Summer</i>	45.4%
		Cruise Ship Calls	278
VISITOR PROFILE			
Average Length of Stay (<i>nights</i>) ¹	7.7	Tourist Arrivals by Place of Stay ¹	
Tourist Arrivals by Purpose of Visit		→ <i>Hotels</i>	64.7%
→ <i>Holiday</i>	94.7%	→ <i>Guest House/Apartment</i>	19.1%
→ <i>Business</i>	5.3%	→ <i>Private</i>	9.1%
		→ <i>Other</i>	7.1%
TOURISM AND OTHER RELATED ECONOMIC STATISTICS			
Total Expenditure (<i>US\$ millions</i>)	\$292.7	GDP at Factor Cost (<i>US\$millions</i>) ¹	\$977.7
Tourism Budget (<i>US\$ thousands</i>) ^{111 bf}	\$4,838	Consumer Price Index (% <i>ch. 2006/'05</i>)	4.2%
Hotel & Restaurant contribution to GDP ¹	4.5%		
ACCOMMODATION STATISTICS		SOCIO-ECONOMIC STATISTICS	
Rooms	6,200	Land Area (<i>square Kilometres</i>)	22,966
Room Occupancy Rates	42.9%	Population (<i>thousand mid year 2006</i>)	301.4

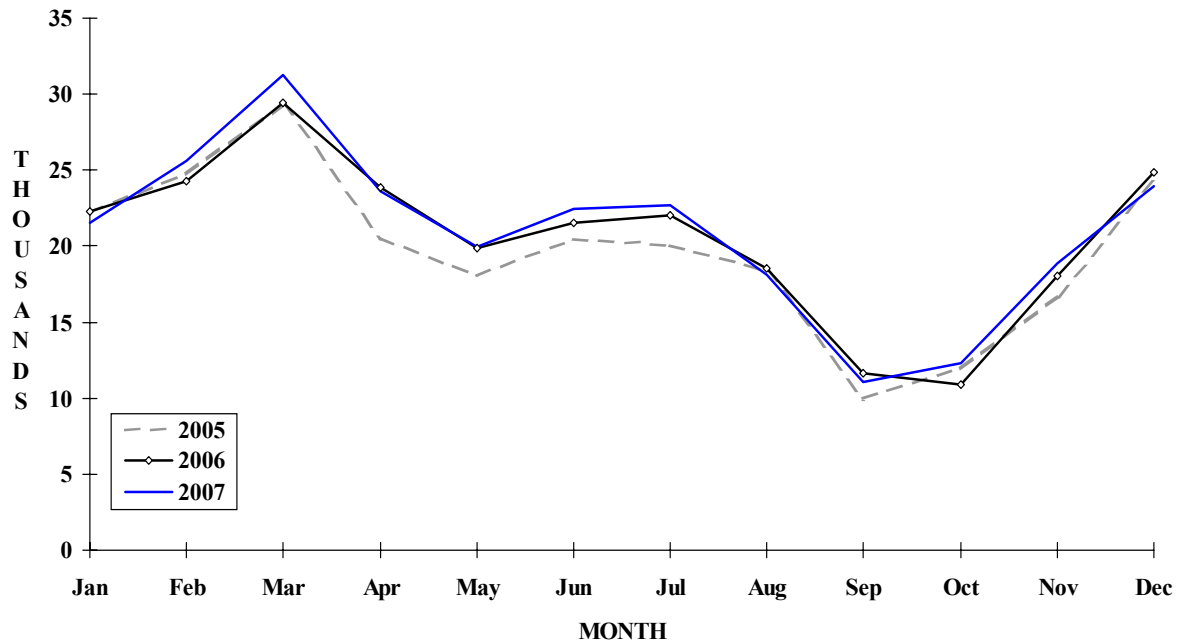
¹ Source: Belize 2000, Visitor Expenditure and Motivation Survey

BELIZE

TOURIST ARRIVALS BY MAIN MARKETS 2007



MONTHLY TOURIST ARRIVALS



TOURIST ARRIVALS BY COUNTRY OF RESIDENCE

Country of Residence	2003	2004	2005	2006	% Share	
					2007	2007
United States	127288	137367	145977	151510	152569	60.7
Canada	9831	11926	13580	15553	16655	6.6
Europe	33530	32767	33466	34373	34175	13.6
Rest of World	49925	48772	43550	45873	48024	19.1
TOTAL	220574	230832	236573	247309	251423	100.0

MONTHLY TOURIST ARRIVALS

Months	2003	2004	2005	2006	% Change	
					2007	2007/06
January	19648	22166	22165	22264	21534	-3.3
February	20412	23645	24734	24278	25618	5.5
March	24460	26817	29321	29415	31267	6.3
April	19660	20320	20503	23888	23595	-1.2
May	17967	17386	17999	19898	19938	0.2
June	19228	18939	20460	21572	22409	3.9
July	20670	21734	20062	22024	22710	3.1
August	19689	17479	18335	18498	18112	-2.1
September	9975	10432	10013	11626	11079	-4.7
October	11524	12167	12011	10883	12292	12.9
November	16313	16873	16711	18079	18911	4.6
December	21028	22874	24259	24884	23958	-3.7
TOTAL	220574	230832	236573	247309	251423	1.7

Note: Tourist arrivals for Belize excludes border traffic from Guatemala and Mexico who enter Belize daily to conduct trade, This data broken down by month and market is available from 1998 only

CRUISE PASSENGER ARRIVALS

Months	2003	2004	2005	2006	% Change	
					2007	2007/06
January	56689	94861	94774	79077	95436	20.7
February	48172	87532	96667	77569	86010	10.9
March	54151	89807	122802	94631	95379	0.8
April	46401	72260	73327	62399	64079	2.7
May	24413	50642	48013	27346	29970	9.6
June	33623	57160	55432	35335	26956	-23.7
July	30602	56794	33140	29443	30478	3.5
August	38809	57018	48518	33875	17368	-48.7
September	31430	45132	32554	21431	15252	-28.8
October	47356	58961	23481	32551	30820	-5.3
November	70377	77579	73175	74960	57551	-23.2
December	93173	103690	98448	87314	74829	-14.3
TOTAL	575196	851436	800331	655931	624128	-4.8
Cruise Ship Calls	315	406	370	295	278	

VISITOR ACCOMMODATION (Rooms) BY AREA

Area	2003	2004	2005	2006	2007
Belize District	943	884	913	874	966
Ambergris	1204	1228	1259	1401	1443
Cayo District	752	2233	836	868	942
Caye Caulker	480	515	546	555	580
Other	1671	291	2039	2091	2269
TOTAL	5050	5151	5593	5789	6200

Source: Belize Tourism Board, Central Statistical Office

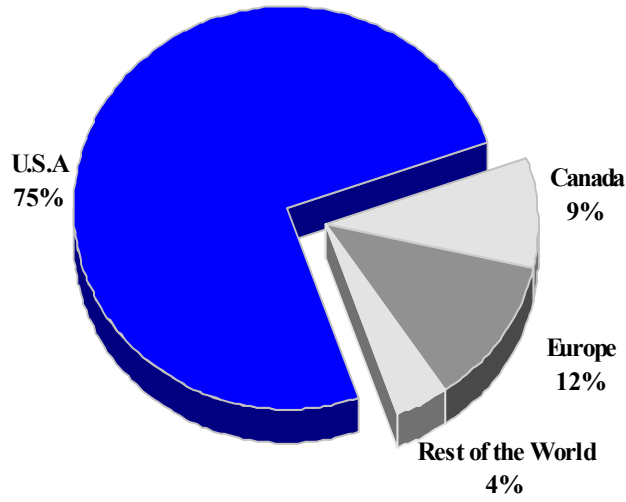
BERMUDA

TOURISM HIGHLIGHTS FOR 2007

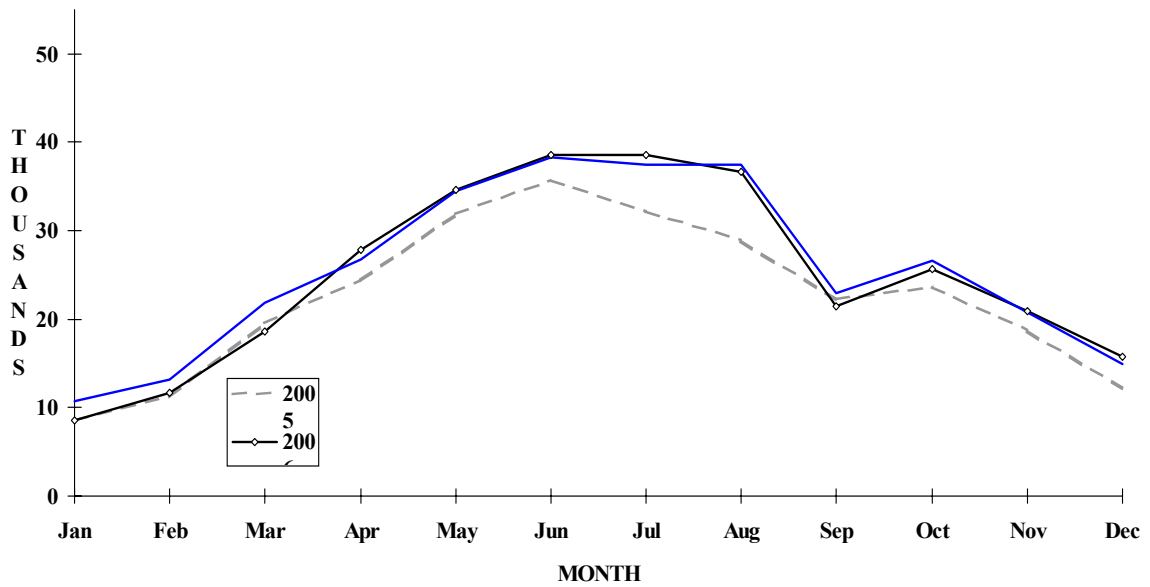
VISITOR ARRIVALS			
Tourist Arrivals ➔ ➔ <i>Winter</i> ➔ <i>Summer</i>	305,548 23.8% 76.2%	Cruise Passenger Arrivals ➔ <i>Winter</i> ➔ <i>Summer</i> Cruise Calls Yacht visitors	354,024 6.5% 93.5% 195 4,195
VISITOR PROFILE			
Average Length of Stay (<i>nights</i>) Tourist Arrivals by Purpose of Visit ➔ <i>Holiday</i> ➔ <i>Business</i> ➔ <i>Other</i>	6.2 76.4% 22.1% 1.5%	Tourist Arrivals by Place of Stay ➔ <i>Hotels</i> ➔ <i>Guest House/Apartment</i> ➔ <i>Private</i> ➔ <i>Other</i>	57.2% 17.0% 24.6% 1.2%
TOURISM AND OTHER RELATED ECONOMIC STATISTICS			
Total Expenditure (<i>US\$ millions</i>) ¹ Tourism Budget (<i>US \$ thousands</i>) ^{IV b}	\$513.2 \$35,900	Consumer Price Index (% <i>ch. 2006/'05</i>) GDP at Factor Cost (<i>US\$ million</i>)	3.1% \$5,354.8
ACCOMMODATION STATISTICS		SOCIO-ECONOMIC STATISTICS	
Rooms Room Occupancy Rates	2,766 67.1%	Land Area (<i>square Kilometres</i>) Population (<i>thousand mid year 2006</i>)	53 63.8

BERMUDA

TOURIST ARRIVALS BY MAIN MARKETS 2007



MONTHLY TOURIST ARRIVALS



BERMUDA

TOURIST ARRIVALS BY COUNTRY OF RESIDENCE

Country of Residence	2003	2004	2005	2006	% Share	
					2007	2007
United States	197911	209054	204005	227725	229498	75.1
Canada	24485	26491	28668	27675	27844	9.1
United Kingdom	21665	21431	22446	27008	30386	9.9
Other Europe	4271	4439	4233	5339	5552	1.8
Rest of World	8244	10202	10235	11226	12268	4.0
TOTAL	256576	271617	269587	298973	305548	100.0

MONTHLY TOURIST ARRIVALS *

Months	2003	2004	2005	2006	% Change	
					2007	2007/06
January	8194	7826	8523	8594	10725	24.8
February	11065	11049	11311	11716	13192	12.6
March	18432	16193	19581	18586	21908	17.9
April	25002	22429	24420	27874	26787	-3.9
May	33064	31029	31978	34625	34471	-0.4
June	35333	35216	35707	38634	38336	-0.8
July	35914	36657	32190	38529	37473	-2.7
August	35045	32669	28947	36650	37441	2.2
September	11260	22896	22331	21474	22961	6.9
October	18979	23447	23665	25700	26582	3.4
November	13259	18923	18743	20887	20762	-0.6
December	11029	13283	12172	15704	14910	-5.1
TOTAL	256576	271617	269568	298973	305548	2.2

* Excluding ship/air visitors. Due to a report conflict the monthly numbers are missing a small number of arrivals.

BERMUDA

CRUISE PASSENGER ARRIVALS*

Months						% Change
	2003	2004	2005	2006	2007	2007/06
January	0	0	0	0	0	-
February	0	0	0	425	0	-
March	136	743	497	0	2765	??
April	9542	11792	6952	20311	20292	-0.1
May	32489	31830	41045	49075	52527	7.0
June	33660	32744	34776	53174	57485	8.1
July	43527	33064	32287	63346	72663	14.7
August	46674	42449	45981	67459	69619	3.2
September	26620	25782	33759	33662	32866	-2.4
October	28825	23185	35364	39240	33334	-15.1
November	4073	4023	15669	9306	12473	34.0
December	551	521	929	301	0	-100.0
TOTAL	226097	206133	247259	336299	354024	5.3

Cruise Ship Calls	156	158	161	185	195
-------------------	-----	-----	-----	-----	-----

* Including ship/air visitors

TOURIST ACCOMMODATION (Rooms)

Type of Accommodation	2003	2004	2005	2006	2007
Hotels	n.a	n.a	n.a	n.a	n.a
Apartments	n.a	n.a	n.a	n.a	n.a
Cottage Colonies	n.a	n.a	n.a	n.a	n.a
Guest Houses	n.a	n.a	n.a	n.a	n.a
Clubs/Other	n.a	n.a	n.a	n.a	n.a
Total	2073	2939	3067	2824	n.a

Source Bermuda Department of Tourism

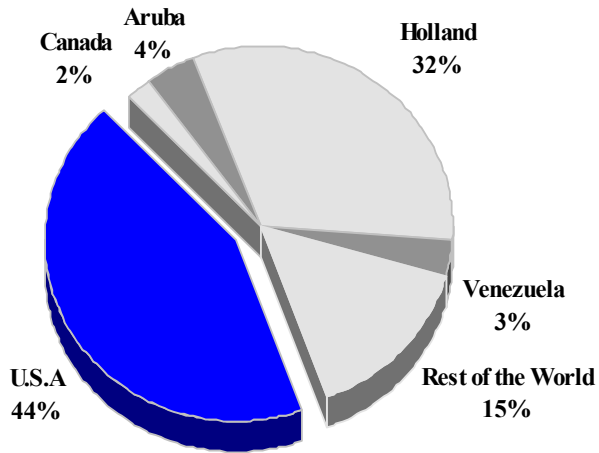
BONAIRE

TOURISM HIGHLIGHTS FOR 2007

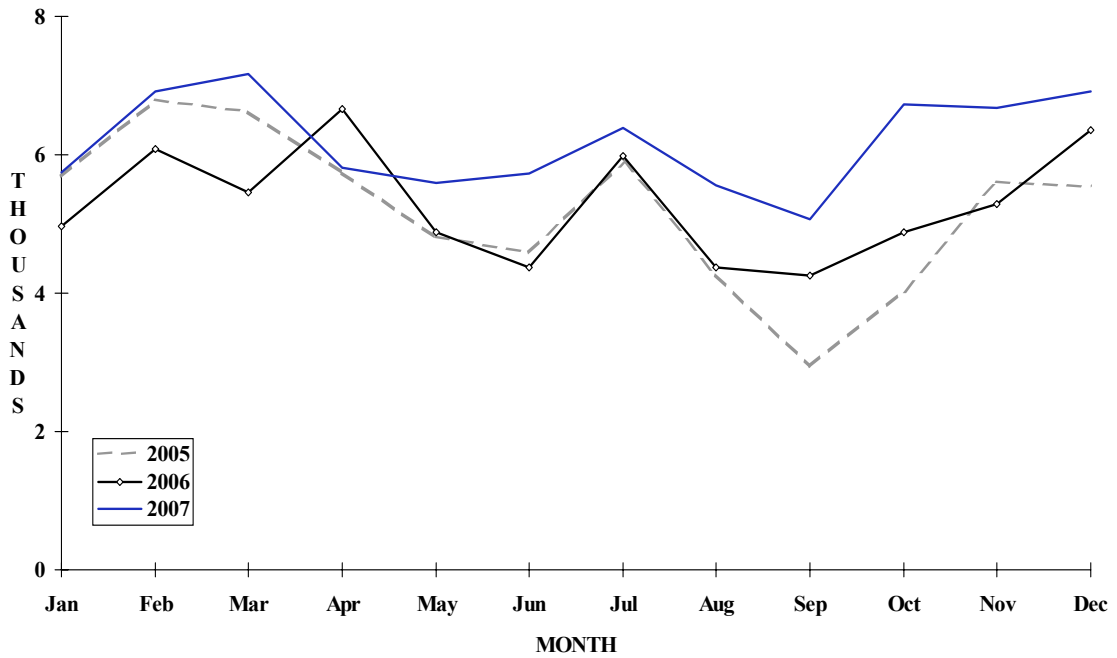
VISITOR ARRIVALS			
Tourist Arrivals →	74,309	Cruise Passenger Arrivals	97,635
↳ <i>Winter</i>	34.5%	↳ <i>Winter</i>	45.3%
↳ <i>Summer</i>	65.5%	↳ <i>Summer</i>	54.7%
Same day Visitors	33	Cruise calls	97
VISITOR PROFILE			
Average Length of Stay (<i>nights</i>)	9.9	Tourist Arrivals by Place of Stay ^{VI}	
Tourist Arrivals by Purpose of Visit ^{III}		↳ <i>Hotels</i>	55.2%
↳ <i>Holiday</i>	97.1%	↳ <i>Guest House/Apartment</i>	31.5%
↳ <i>Business</i>	2.7%	↳ <i>Private/Unregistered</i>	13.0%
↳ <i>Other</i>	0.2%	↳ <i>Other</i>	0.3%
TOURISM AND OTHER RELATED ECONOMIC STATISTICS			
Total Expenditure (<i>US\$ millions</i>) ^{III}	\$83.7	Tourism Budget (<i>US\$ thousands</i>) ^{II b}	\$1,676
		Consumer Price Index (% <i>ch 2006/'05</i>)	1.3%
ACCOMMODATION STATISTICS		SOCIO-ECONOMIC STATISTICS	
Rooms ^{II}	1,384	Land Area (<i>square Kilometres</i>)	288
Occupancy Rate	78.0%	Population (<i>thousand mid year 2004</i>)	11.1

BONAIRE

TOURIST ARRIVALS BY MAIN MARKETS 2007



MONTHLY TOURIST ARRIVALS



TOURIST ARRIVALS BY COUNTRY OF RESIDENCE *

Country of Residence	2003	2004	2005	2006	2007	% Share 2007
U.S.A.**	25228	26623	25363	26670	32085	43.2
Canada	843	1175	1157	1511	1716	2.3
Aruba	2493	2690	2018	2592	3159	4.3
Holland	19987	19506	20676	19246	23692	31.9
Germany	2236	1868	2072	1709	1648	2.2
Venezuela	1725	1633	1632	1642	2538	3.4
Rest World ***	9667	9661	9632	10182	9471	12.7
TOTAL	62179	63156	62550	63552	74309	100.0

* Excluding arrivals from Netherlands Antilles

** Including Puerto Rico

*** Including arrivals from other European countries: 6856 in 2003, 6599 in 2004, 7318 in 2005, 7247 in 2006 and 6087 in 2007.

MONTHLY TOURIST ARRIVALS

Months	2003	2004	2005	2006	2007	% Change 2007/06
January	4612	6201	5702	4963	5739	15.6
February	5693	5982	6798	6085	6920	13.7
March	5277	5391	6623	5454	7164	31.4
April	6045	6539	5742	6659	5819	-12.6
May	4216	5130	4808	4889	5599	14.5
June	4317	4352	4599	4379	5724	30.7
July	5544	4736	5897	5988	6388	6.7
August	4558	4387	4272	4366	5559	27.3
September	4401	3624	2942	4249	5070	19.3
October	5648	5836	4029	4880	6735	38.0
November	6081	5492	5603	5288	6672	26.2
December	5787	5486	5535	6352	6920	8.9
TOTAL	62179	63156	62550	63552	74309	16.9

CRUISE PASSENGERS

Months	2003	2004	2005	2006	2007	% Change 2007/06
January	7545	11484	5049	7685	10425	35.7
February	8153	9259	5164	11598	11430	-1.4
March	8944	5388	8004	7580	10269	35.5
April	2903	3603	1383	4761	12122	154.6
May	225	346	550	693	4129	495.8
June	597	0	1406	0	681	-
July	220	574	1166	464	395	-14.9
August	650	477	1039	732	947	29.4
September	763	390	765	753	886	17.7
October	890	774	584	819	3604	340.0
November	5101	7715	5999	12658	19474	53.8
December	8610	13333	8968	14101	23273	65.0
TOTAL	14790	53343	40077	61844	97635	57.9

Cruise calls	72	78	89	78	97
--------------	----	----	----	----	----

TOURIST ACCOMMODATION (Rooms)

Type of Accommodation	2003	2004	2005	2006	2007
Hotels	n.a	n.a	n.a	n.a	n.a
Apartments	n.a	n.a	n.a	n.a	n.a
Condominiums	n.a	n.a	n.a	n.a	n.a
Other	n.a	n.a	n.a	n.a	n.a
TOTAL	1070	1175	n.a	n.a	1384

Source: Bonaire Government Tourist Bureau